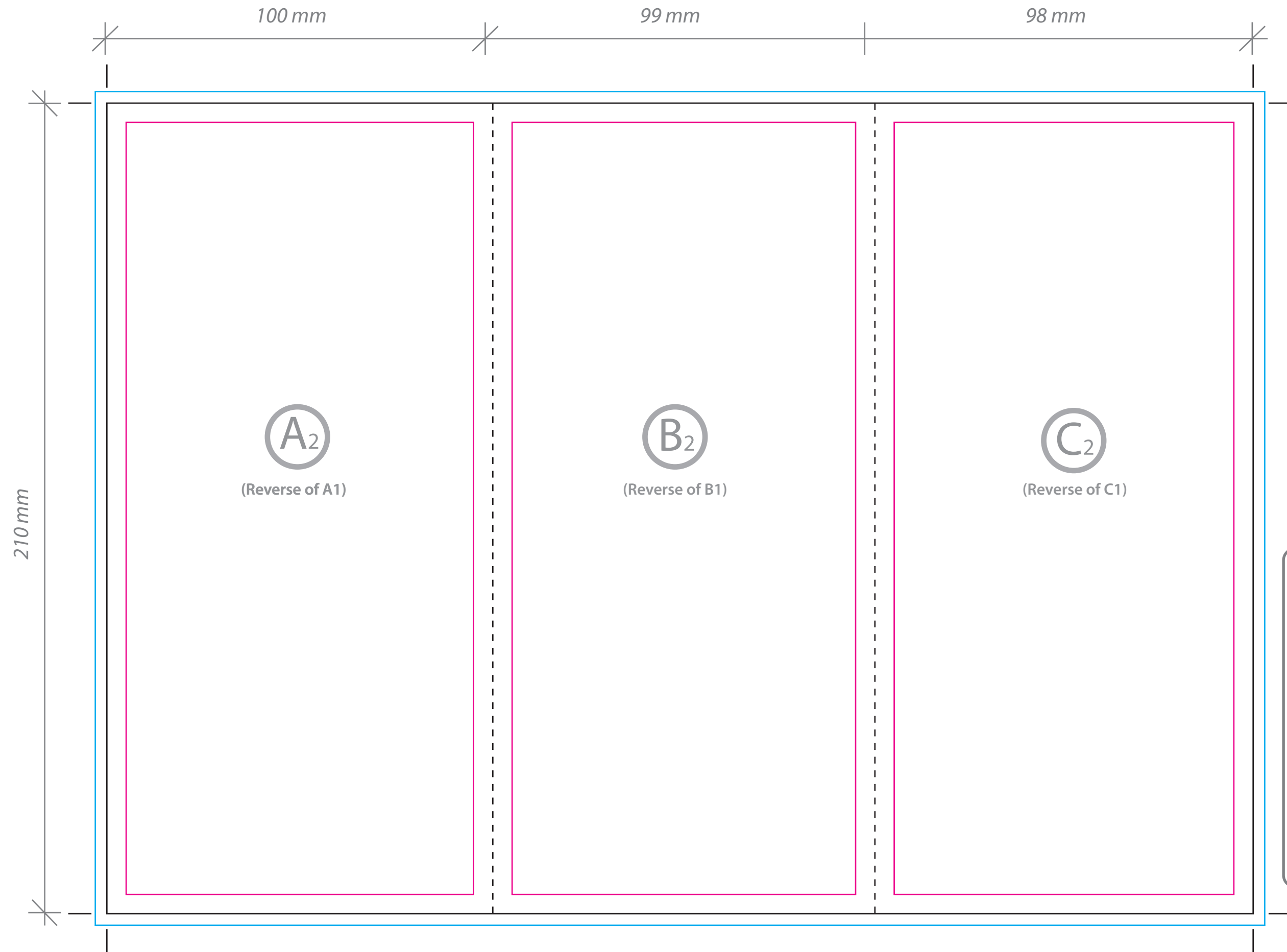


**A4 - 1/3 A4 Roll Fold (Front)**

— Finished Size  
 — Bleed Area  
 — Text Limit/Quiet Border (text and photos not running to bleed should be within this area)

Overall size 297mm x 210mm

Please **remove** this Template after creating your artwork.



**How is this leaflet folded?**

C<sub>2</sub> folds onto B<sub>2</sub>.  
 Then A<sub>2</sub> folds C<sub>1</sub>.  
 Once folded A<sub>1</sub> is the top page, and  
 B<sub>1</sub> is the back page.  
 (See diagram below.)

The diagram shows the leaflet folded into a stack of three pages. The top page is labeled A<sub>2</sub>, the middle page is B<sub>2</sub>, and the bottom page is C<sub>2</sub>. The pages are shown in a perspective view, with dashed lines indicating the fold lines.

**A4 - 1/3 A4 Roll Fold (Reverse)**

— Finished Size  
 — Bleed Area  
 — Text Limit/Quiet Border (text and photos not running to bleed should be within this area)

Overall size 297mm x 210mm

Please **remove** this Template after creating your artwork.